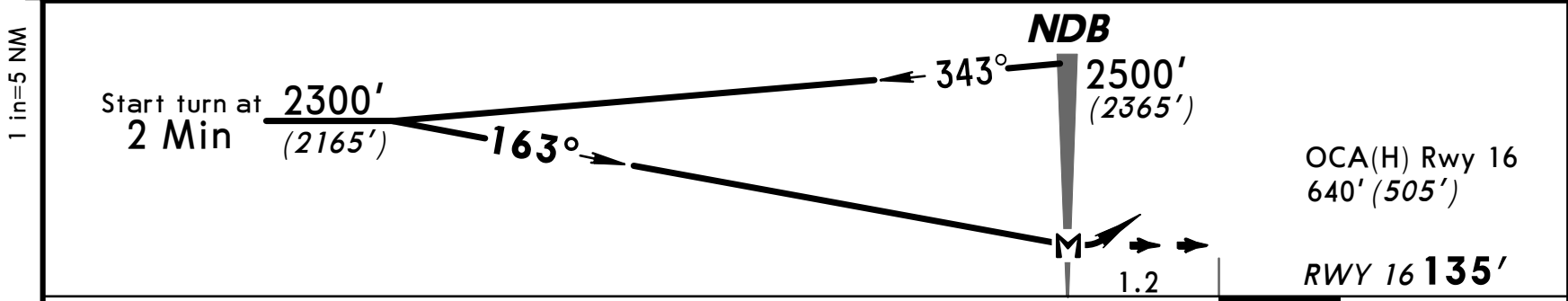
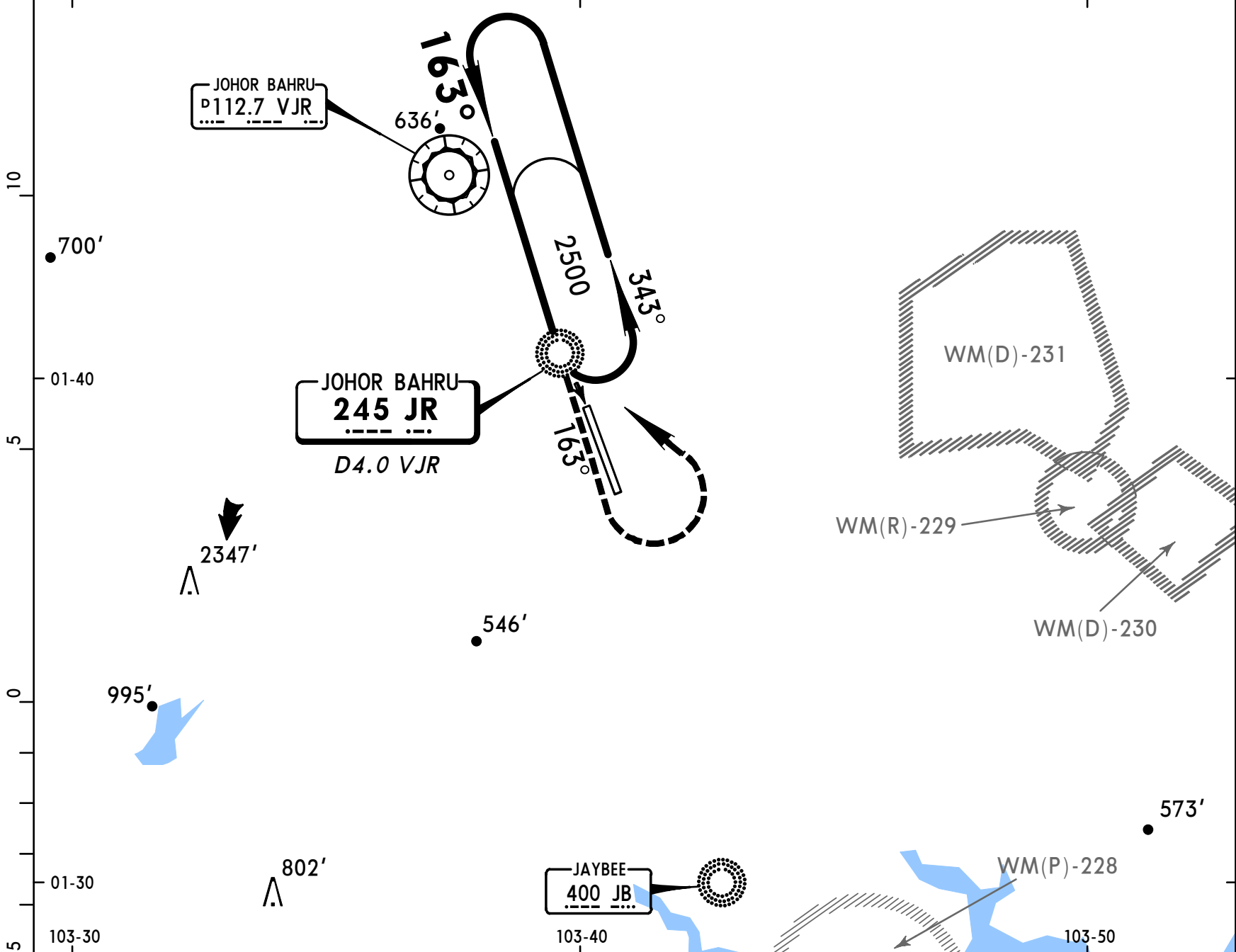


WMKJ
SULTAN ISMAIL

22 DEC 00 **(16-3)**

JEPPESSEN JOHOR BAHRU, MALAYSIA
 CAT C & D **NDB (JR) Rwy 16**

*ATIS 126.6		*JOHOR Approach 124.7		*JOHOR Tower 122.5		*Ground 121.8	
NDB JR 245		Final Apch Crs 163°		No FAF		MDA(H) 640' (505') Apt Elev 135' RWY 16 135'	
MISSED APCH: Climb on 163° to 1300' turn LEFT and return to JR NDB climbing to 2500' or as directed by ATC.							<p>MSA JR NDB</p>
Alt Set: hPa Rwy Elev: 5 hPa Trans level: FL 130 Trans alt: 11000' (10865') 1. Procedure based on 185 kts IAS.							



Gnd speed-Kts	70	90	100	120	140	160	PAPI ALS	1300' ↑ on 163°	← LT	JR 245
Descent Gradient 4.7%	—	—	476	571	666	762				
MAP at NDB										

STRAIGHT-IN LANDING RWY 16				CIRCLE-TO-LAND			
MDA(H) 640' (505')							
ALS out				Max Kts			
A	NOT APPLICABLE			A	NOT APPLICABLE		
B	NOT APPLICABLE			B	NOT APPLICABLE		
C	1600m			180	1050' (915')-3700m		
D	2000m	2400m		205	1050' (915')-4600m		